

Note from the Executive Director

SPRING 2024

Spring is here, although we never really did have a winter this year! We are ramping up to do outreach for all three programs at CILWW with plans to attend many of the area Farmer's Markets and other community events with hopes of recruiting caregivers, volunteer drivers, and spreading the word about independent living services.



In April, eight staff from CILWW attended the Aging, Disability, and Independent Living Network conference in Lacrosse. There was great representation from the eight Independent Living Centers in Wisconsin, the Aging and Disability Resource Centers, the Department of Human Services, and representatives from the governor-appointed State Councils. I am looking forward to the opportunity to network with all the various agencies attending the summit.

We are getting ready to begin work on a new three-year strategic later this summer once the State Plan for Independent Living has been completed by the Independent Living Council of Wisconsin. Both staff and board members are looking forward to a strategic planning retreat and the opportunity to develop a new plan that will guide center programs, services, and both long and short term goals over the next three years.

Finally, I would like to take the opportunity to thank all the CILWW staff for their hard work and dedication to making CILWW the great IL Center that it is. As March was Employee Appreciation Month, we took the time to let staff know how appreciative the center is for all of their hard work and dedication to our mission and the consumers we serve, with snacks and gifts at our monthly All Staff meeting.

Kyle Kleist
Executive Director



IN THIS ISSUE

From the Executive Director

IL Days 2024

Welcome New Staff

CILWW Staff Highlight

Independent Living

Fishing Has No Boundaries

Personal Assistant Services

New Freedom Transportation

AT Corner and Programs

For Sale/Donation

CILWW is a community based, nonresidential, private nonprofit agency that is staffed and governed by people with disabilities. Our focus is to empower people in making choices that maintain or increase their independence. We serve people with disabilities, their families, and the community in which they live. We also work with area businesses and service providers that need assistance in responding to the needs of people with disabilities.

Opportunity
+ Responsibility
+ Empowerment
= Independence



Independent Living (IL) Days, 2024

This past February 13 - 15, eight staff from CILWW went down to Madison for our annual IL Days activities, along with staff from all eight IL Centers in Wisconsin. This year there was a Gala and awards ceremony on Tuesday evening with presentations of the Relentless Badger Awards by all eight centers and a new award titled "The Maureen Ryan Excellence in Independent Living", which will go to an IL staff that has demonstrated excellence in service to Independent Living in Wisconsin. This year the award was given to Maureen Ryan for all her years of service as WCILC Director and work in advocacy for persons with disabilities in Wisconsin. CILWW's Relentless Badger award went to two IL staff, Desi Hutsell and Todd Taylor-Duke, for their advocacy and work in making the businesses and communities in the CILWW service area accessible.

On Wednesday, there was a variety of workshops for staff in the morning and afternoon, with a catered lunch. Samantha Lotts, Tina Joiner and I presented a workshop titled "CILWW Personal Assistant Services and How They Relate to Independent Living" which went well and received good reviews from those who attended.

Finally, on Thursday CILWW staff broke up into two teams for visits with all state Representatives and Senators in our service area at the Capital. It was a busy day at the Capital as legislators were wrapping up the spring session, so we mostly met with legislative staffers but did get a chance to meet directly with a couple of legislators. It was a non-budget year but staff still talked about additional state funding for the IL Centers in Wisconsin, along with other legislative priorities around health care and long-term care, funding for mental health services, and funding for transportation services and programs. Staff commented on how this was one of the best IL Days they have been to in recent years and I would agree!

Kyle Kleist
CILWW, Executive Director



Top (left to right): Tina Joiner, Ashley Lien, CILWW Board President Nicole Everson, and Senator Jesse James.

Bottom (left to right): Jason Endres, Kyle Kleist, and Julie Endres.



Left to right: Samantha Lotts, Amanda Miller, Jason Endres, Julie Endres, Casey Carlson, Kari Mankus, Bobbi Craig, Brandy Flood, and a legislative staffer.



Left to right: Rep. Karen Hurd, CILWW Board President Nicole Everson, Kyle Kleist, Bobbi Craig, and Ashley Lien.

Independent Living (IL) Days, 2024



Left to right: *Bobbi Craig, Kari Mankus, Amanda Miller, legislative staffer, Samantha Lotts, Brandy Flood, and Casey Carlson.*



Left to right: *Amanda Miller, Ashley Lien, Casey Carlson, and Kari Mankus.*



Left to right: *Tina Joiner, Casey Carlson, Brandy Flood, Samantha Lotts, and Kari Mankus.*



Top (left to right): *A legislative staffer, Tina Joiner, Ashley Lien, and CILWW Board President Nicole Everson.*
Bottom: *Kyle Kleist*



Left to right: *CILWW Board President Nicole Everson and Senator Jesse James.*



Left to right: *Kyle Kleist, CILWW Board President Nicole Everson, Ashley Lien, a legislative staffer, and Tina Joiner.*

Welcome New Staff



Brooke Vinck *Transportation Specialist*

Hi! I'm Brooke Vinck and I am a Transportation Specialist. I currently live in Colfax, WI. I have a 1-year-old daughter, Maggie, and a 5-year-old step daughter, Brilee. In my spare time I enjoy spending time with the kids, swimming, camping, going for rides in the side by side, and crochet. I have enjoyed my first few weeks here at CIL and look forward to learning more about my role in Transportation.



Kristen Monsees *Transportation Specialist*

Hi, I'm Kristen Monsees. I currently live Menomonie WI, however I was born in New York and raised in New Jersey and lived there until 2011. I have a 10 year old son who is my world and constantly keeping me on my toes and keeps me busy with the crazy sports schedule. In my spare time, I love going out and doing things with my son and friends including mini road trips/vacations, going to the movies, camping, ect. One of my favorite quotes is "Don't count the days, make the days count".



Lauryn Holmberg *PAS Registered Nurse*

Hi there! I'm Lauryn and I am an RN in our Personal Assistant Services program. I received my Nursing degree from Chippewa Valley Technical College in 2017 and have spent the majority of my nursing career working with individuals with disabilities and the elderly. My favorite part of my job is meeting with and getting to know our consumers. I currently live in Elk Mound with my husband, 2 year old son and golden retriever. In my free time, I enjoy doing just about anything outdoors. I enjoy fishing, time at our family cabin and attending local craft shows/stores.

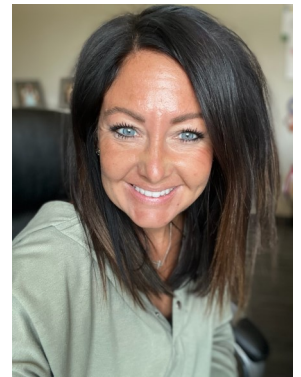
CILWW Staff Highlight

My name is Amanda Miller, and I am currently serving as the Director of Independent Living Services at The Center for Independent Living for Western Wisconsin. I am a dedicated professional with a background in empowering individuals with disabilities to live independently. I am happily married with three lovely daughters and we reside in the Spring Valley area on a large property.

During the summer months, I dedicate my leisure time to outdoor activities such as fishing, boating, and swimming. In the winter, I prefer to spend my time indoors reading and socializing with loved ones.

I have been with CILWW since 2015, initially starting as an Independent Living Specialist before being promoted to Independent Living Coordinator. In this role, I oversaw the daily operations of the department and worked closely with staff to ensure the success of our programs. I was later promoted to my current position as the Director of Independent Living, where I am responsible for managing services, collaborating with community partners, and representing our organization in various coalitions and committees. I have been in this role for 4 years and find great fulfillment in the work that we do.

I am passionate about serving individuals with disabilities and believe in the mission and vision of CILWW. I am fortunate to work with a dedicated team of professionals who share the same values and commitment to our clients.



Amanda Miller
*Independent Living
Director*

Relentless Badger Award

The Relentless Badger Award is given to individuals selected by each Independent Living Center in Wisconsin. The award recognizes those who have shown dedication to the IL philosophy and the mission of Wisconsin's Independent Living Network, as well as strong advocacy for persons with disabilities or outstanding work on behalf of this population.

This year, CILWW has nominated two deserving staff members, Desi Hutsell and Todd Taylor-Duke. Both have displayed unwavering commitment to advocacy and the overall mission of Independent Living throughout their length of service. Their dedication and passion for advancing the Independent Living mission, as well as their expertise in ADA guidelines, have allowed them to better serve our consumers and community.

Desi and Todd, through their advocacy efforts, have worked tirelessly to educate consumers and the community on the impact of inaccessibility and the rights of individuals with disabilities. They continuously seek to enhance their knowledge and have conducted both home and public accessibility assessments to create a more inclusive environment for individuals with disabilities in our service areas and beyond. Their dedication has been recognized through numerous positive surveys highlighting the impact they have made through their advocacy and commitment to effecting change.

Congratulations

Congratulations on your well-deserved award!



Desi Hutsell (left) and Todd Taylor-Duke (right)
2024 Relentless Badger Award Winners

Fishing Has No Boundaries

Many may perceive fishing as a simple leisure activity, but for over 56 million Americans with disabilities, access to such an outdoor experience remains a challenge. Fishing Has No Boundaries®, Inc. (FHNB) is a non-profit organization dedicated to providing individuals with disabilities the opportunity to enjoy the recreational activity of fishing. With 18 chapters in 9 states, including the Chippewa Valley Chapter sponsored by CILWW in Wisconsin, FHNB has effectively facilitated the participation of numerous individuals in this enriching and uplifting activity.



The FHNB-Chippewa Valley Chapter's annual event is scheduled for September 14th, 2024, at the Lake Wissota Lodge and Event Center in Chippewa Falls, WI. This event is designed to provide an inclusive and enjoyable fishing experience for individuals with disabilities. Participants will be provided with meals, fishing equipment, boats, pontoons, and guides. On the day of the event, fishing licenses will not be necessary.

FHNB-Chippewa Valley Chapter welcomes volunteers to contribute pontoon boats to use at the day of the event. For those interested in participating or donating a pontoon, please contact Amanda Miller or Bobbi Craig at 715-233-1070 or via email at amandam@cilww.com or craig@cilww.com.

Fishing Has No Boundaries® Inc. Events in Wisconsin

Which one is near you.

NORTHWEST WISCONSIN

Hayward Chapter

Chippewa Flowage

Email: hayfhnbc@cheqnet.net

Phone: 715-634-3185

May 17 & 18, 2024

Chippewa Valley Chapter

Lake Wissota

Email: Amanadam@cilww.com

Or craigb@cilww.com

September 14, 2024

St. Croix Valley Chapter

St. Croix River, Hudson WI

Email:

fhnbcroixvalley@gmail.com

September 21, 2024



NORTHEAST WISCONSIN

Eagle River Chapter

Eagle River Chain of Lakes

Email: wbc1@newnorth.net

June 1 & 2, 2024

EAST CENTRAL WISCONSIN

Fond du lac Chapter

Lake Winnebago

Email: marciasnyder@charter.net

August 24 & 25, 2024

SOUTHEAST WISCONSIN

Great Lakes Milwaukee Chapter

Lake Michigan

Email: fhnbmilwaukee@gmail.com

Website:

<http://www.fhnbgreatlakesmke.com/>

June 1, 2024

SOUTH CENTRAL WISCONSIN

Madison Chapter

Governor Nelson State Park

Email: fhnbmadison@gmail.com

www.FHNBMadison.com

July 13, 2024

Volunteer Driver Spotlight: Ed Walters

Meet Volunteer Driver: Ed Walters

Ed has been driving for New Freedom Transportation for about 4 years, he found out about driving for us through his daughter who also drove for us! He has lived in Raddisson in WI, his entire life and been at the same place he is currently at for 48 years.

Ed has been married for 48 years in April (congratulations Ed and wife!) Ed has 5 kids, 10 grandkids, and 7 great-grandkids. Before driving for us Ed was a sailor on the Great Lakes for 47 ½ years. When commenting about how he must not have been home a lot, his response was “60 days on and 30 days off” the last 25 years he was a captain Ed retired off the American Mariner ship.

In his free time he does lots of fishing and hunting, he also has a small hobby farm 7 cows, a bull, and chickens that keeps him busy. When I asked him if he had any other fun facts to share Ed responded with “I really do enjoy driving people around and being on the road.”



Ed Walters
Volunteer Driver

Thanks for driving for us Ed!



Interested in becoming a volunteer driver for New Freedom?

As a Volunteer Driver, you will:

- Provide rides for medical appointments, shopping, or social and recreational activities.
- Receive mileage reimbursement of 67 cents per mile (2024 Federal Rate).
- Help make a difference in someone's life.

Contact us:

 800.228.3287

 melw@cilww.com

Visit us:

 www.cilww.com

 2920 Schneider Ave SE
Menomonie, WI 54751

Personal Assistant Services

Caregiver Highlight



Jamie Avery
Personal Caregiver

My name is Jamie Avery and I've been a caregiver for CIL for several years. I live in rural Mondovi with my husband and 3 daughters. We have a funny farm with 3 golden doodles, 6 cats and a bunch of spoiled chickens. I've been caregiving all of my life. I owned a daycare for ten years, worked for Headstart and a school district before my current job. I love working with my current client. It's the most fun and rewarding job I've ever had!

Jamie began working at CIL in 2018 and has a special relationship with her consumer. They have become like family and their families enjoy spending time together. Jamie goes out of her way to assist her consumer to be as independent as possible in their daily life. For these reasons we are highlighting Jamie Avery for the caregiver spotlight this quarter.



BECOME A CAREGIVER!

Help empower our community members to live an independent lifestyle within their own homes!

All services are completed within the consumer's home:

- Supportive home care
- Assist w/daily safety
- Respite/Mentoring
- General Cleaning Activities
- Assistance w/daily living activities
- Medically oriented tasks

CILWW's Personal Assistant Services program offers:

- competitive wages,
- flexible scheduling,
- paid travel for qualifying consumers,
- and paid training.

Interested individuals contact Samantha Lotts at slotts@cilww.com for further information or call 715.233.1070.



Assistive Technology Demonstration & Loan Program

WisTech is Wisconsin's Assistive Technology (AT) program. AT is a device or service that allows people to function as independently as possible at home, school, work, and in the community. CILWW is a regional AT Device and Demonstration Center. CILWW has almost 2,000 different AT devices that we can loan and/or demonstrate to people. CILWW staff can bring devices to people's homes, answer questions about devices, loan devices for a short period of time, give vendor and funding resources, and use their experience to help find the most cost effective options.

Check out our new assistive technology devices!



OttLite Craft Floor Lamp

This week at CILWW, we highlight the OttLite Craft Floor Lamp, a specialized lamp designed with crafters in mind. The OttLite features an adjustable 3X optical grade magnifier arm, making it a valuable tool for precision work and accurate color perception. The wide wing shade can be easily rotated to direct light where needed, and the flexible neck allows for convenient height adjustments. This lamp is suitable for crafting rooms, workshops, homes, or offices. The OttLite illumination emits minimal heat and glare, helping to reduce eye strain during prolonged use. Priced at approximately \$120 to \$180, the OttLite Craft Floor Lamp includes a 5-inch diameter attached magnifier.



Ice Cleats

Snow and ice are inevitable in Wisconsin's winter months. Our winter season is beautiful but with the snow and ice comes the increase risk of falling. CILWW would like to highlight our Macro Traction Ice Cleats, which provided superior traction and stability in a variety of winter conditions. These cleats cover from heel to toe, and easily clip on to any shoes or boots to provide an extra layer of protection and help lesson risk of falls. They feature multi directional cleats to allow you to stride easily on ice and snow covered surfaces.

Assistive Technology Corner *(continued)*

CILWW Assistive Technology Article- Steady Spoon

Basic needs: FOOD, WATER, SHELTER, and CLOTHING.

It can be highly frustrating to have these essentials but be physically incapable of performing them. Reliant on others to carry out basic daily tasks, life becomes challenging.

However, we're here to help you maintain as much independence as possible in your everyday life.

Today, we want to highlight an item that can aid with one of these basic needs: EATING. Many individuals face difficulties due to tremors, weak muscles, or limited dexterity. These obstacles can stem from various health conditions.

The Steady Spoon is an adaptive utensil that stabilizes your spoon while you eat. It features a unique design that empowers individuals who usually struggle to feed themselves, fostering INDEPENDENCE. The spoon incorporates built-in counterweights to ensure the spoon remains level regardless of arm position or tremor intensity. The handle facilitates use without requiring a strong grip, thanks to the hook and loop strap connection.

Before making a purchase, the Steady Spoon is available for loan through CILWW's loan program. Alternatively, it can be bought online from multiple retailers, such as the Rehab Store, Health Products for You, and Performance Health websites, to name a few. The purchase price for the Steady Spoon ranges from \$35 to \$60, depending on the chosen retailer.



If you would like more information on other assistive technology devices that could potentially improve your independence, please call CILWW at 715.233.1070 or 800.228.3287.

CILWW provides services at no cost to the individual. CILWW is not a funding source to purchase the assistive technology.

There are various services available through the assistive technology program at CILWW as a part of the WisTech Assistive Technology Program. Our agency can provide information on WisTech's alternative financing options (WisLoan, Telework, and TEPP) per request.

Are you or someone you know...

- **Having difficulty hearing or using the telephone?**
- **Hard of hearing?**
- **Deaf or severely hard of hearing?**
- **Mobility/Motion impaired?**
- **Speech impaired?**
- **Deaf with low vision or blindness?**
- **Deaf and blind?**



If you answered yes, you may be interested in finding the AT you need to access telephone services. Equipment could be amplified phones, captioning phones, neck loops, and other devices. Schedule an appointment to try a variety of equipment with one-on-one assistance from knowledgeable and experienced staff!

Staff can also help you apply for funding through TEPP: Telecommunications Equipment Purchase Program. Money collected through WI telephone service providers goes into the WI Universal Service Fund, which pays for TEPP. CILWW's role is to help you access the funding you need to get the equipment you need!

Loan Programs

WisLoan offers loans to help people buy assistive technology or equipment such as modified vehicles, wheelchairs, and ramps. There are no income requirements and individuals are not required to exhaust personal or public funding. Under the program, banks provide loans at a fixed interest rate of 6.5% to qualified borrowers. Loan amounts depend on the item and ability to repay.

Telework is a loan program that allows residents with disabilities to purchase computers and other equipment needed to work from home or from other remote sites away from the office, such as work on the road or at a Telework center.

TEPP

WisLoan +
Telework
Loan programs designed for
Wisconsinites with disabilities



IndependenceFirst
The Resource For People With Disabilities

For Sale List

2012 DODGE GRAND CARAVAN ACCESSIBLE VAN

[\$28,000] [Located in Germantown, Wisconsin]
Contact: Philip Meinzen 262.707.4493

- 72,300 Miles
- Well cared for, excellent condition
- New tires; New brakes and rotors
- Side entry Ramp/with auto Lift
- Two removable front seats also has EZ Loc, with electronic cradle and pin installed for wheelchair front sitting.
- Clean interior well preserved exterior clean underbody

HOSPITAL BED

Almost new Hospital Bed-all electric. Sheets and incontinence pads included. Paid \$1,900. Asking \$1,100. Will need to be picked up.
Contact Bev @ 715.273.5629

POWER WHEELCHAIR

2023 Pride Mobility Quantum Q6 Edge 2: 1 Level. Reclines, elevates, 300# weight limit. Only used 3 weeks. Paid \$10,000. Asking \$1,500.
Contact JoAnne @520.682.7375

STAINLESS STEEL HANDRAIL

Stainless Steel Handrail. For pool or hot tub. Asking \$150. Contact Kari Ann @ 715.828.3718

STAIRLIFT

Pinnacle Stair lift system. Asking \$500. Contact Cyndi @715.456.4333

- 350 lb weight capacity
- Has 2 remotes
- Used on a straight flight of stairs with 12 steps. Stair angle 32-52 degrees.
- Approximately 14 feet long.

ALL FROM ONE SELLER

Contact Becky @ 715.239.1486

Journey UP Independence Bed, Twin XL multi-position that rotates to standing position, like a lift chair. Brand new, never been slept in. \$2,500.00.

Standing Rolator. Upright type with little use. \$100.00

ALL FROM ONE SELLER

Contact Glenn @715.866.8383

Massage table \$100.

Invacare Storm TDX 5 wheelchair with tilt only needs batteries make offer.

Quantum Edge 2 wheelchair 8 years old tilt only (needs batteries) make offer.

Roho cushions for wheel chairs.

Rifton Supine Stander E430 \$900.

Quantum Edge 3 wheelchair (with Roho cushion) 3 years old new batteries tilt and height adjustment \$1500.

Jouse joystick for alternative cursor control and access for computers and mobile devices \$500.

Rolling commode (rolls into shower) Numotion \$400.

Hospital bed with pressure mattress \$1700. NEVER USED.

For Donation List

FROM PERSONAL ASSISTANT SERVICES (LOCATED AT CILWW)

Bedside table variable height.
Commode Assist removable bucket.
Transfer benches one wooden and one plastic.

CILWW waiver will need to be signed before donation. If you are interested in any equipment under this section, please contact Samantha @ 715.233.1070

STAIR LIFT

It is a straight lift for 10 stairs, then it makes a 180 degree turn to the left for the last 4 steps.
Contact Terrance @ 715.235.0079

WHEELCHAIRS

Manual wheelchair small size.
Contact Ervin @715.492.3445

Manual wheelchair with back up brake system.
When the person stands up the brake engages.
When the person sits down the brake releases. This provides an extra safety feature. It has the normal brakes too. Contact William@ 952.270.5481

WHEELCHAIR LIFT

Interior wheel chair lift for van. Hydraulics make the lift swing out to the side of the van and lower the ramp (with assist). Contact Rodney @ 715.222.9390

WOODEN RAMP

Wooden ramp made with treated lumber. Four feet wide by sixty feet long. Includes wood landing pad with rails and skid strips.

It will need to be disassembled. It was built so it could be easily disassembled.

Contact Marty @ 715.232.8166. If he does not answer, please leave a message and he will return the call.

ALL FROM ONE DONOR

Arms that attach to a toilet
Shower chair
Walker-standard
Carol @715.808.2129

ALL FROM ONE DONOR

Upright walker
4-wheeled walker with seat
Bike-looking seat on a steel frame-seat is able to move. Contact John @ 651.770.5283 (please call late afternoon or evening).

MISCELLANEOUS ITEMS

MedCline Reflux relief pillow system

- Natural reflux relief without medication. And, no more stacking pillows.
- Four-layer, cool gel-infused, environmentally safe Certi-PUR® foam.
- The only patented Reflux Relief Wedge with arm pocket for side sleeping.
- Adjustable stuffing in the Therapeutic Body Pillow.
- Made to last years and years.

Contact Deb @ 800.228.3287
or 715.233.1070 ext. 202

For information on the items on this list, please contact the person listed directly. To get on or be removed from this list please contact Deb at CILWW @ 800.228.3287 or 715.233.1070 extension 202.

CILWW does not warrant the condition or terms of the sale of any device or equipment offered for reutilization by any seller or buyer. CILWW is not liable for claims, liabilities, damages, losses, costs, expenses, maintenance and penalties arising from items being purchased or sold. It shall be the responsibility of the seller or donator to provide accurate and detailed information about the device and equipment specifications and condition to buyer. CILWW functions solely on sharing the information with other parties.

Center for Independent Living
2920 Schneider Ave SE
Menomonie, WI 54751

Consumer address

Center for Independent Living for Western Wisconsin, Inc.

MAIN OFFICE

2920 Schneider Avenue East
Menomonie, WI 54751
715-233-1070 Voice / TTY
800-228-3287 Voice / TTY
715-233-1083 Fax

BRANCH OFFICE

2021 Cenex Drive Suite D
Rice Lake, Wisconsin 54868
715-736-1800 Voice / TTY
1-866-419-1260 Voice / TTY
715-736-0265 Fax

Call Toll-Free 800.228.3287

The Advocate is available upon request in various formats including large print and e-mail notice. Our website also displays a text version of our most current version issue. If you are receiving more than one copy of the Advocate or wish to be removed from the mail list please call our Menomonie office. If you are currently on our Advocate mailing list and have Internet access please consider being notified by e-mail and contact cilww@cilww.com .



Follow us on

